

R3 PTR 54 RA

Downlight para montaje empotrado en techo.

Cuerpo: estructura en chapa de acero y marco en aluminio inyectado.

Reflector: aluminio anodizado brillo (RA).

Difusor: PMMA microprismático.

Cubierta: PMMA transparente.

Acabado superficial: blanco (RAL 9003). Otros colores, consultar.

Distribución de la luz: simétrica.

Fuente de luz: LED.

Índice de reproducción cromática (CRI): CRI>80, CRI>90.

Temperatura de color (K): 3000K, 4000K.

Tolerancia de color (SDCM): 3 elipses de MacAdam.

Equipo de alimentación: electrónico (HF) o regulable DALI (HFRD). Disponible con kit de emergencia (KE).

Grado de protección (IP): IP20. IP54 (parte vista).

Montaje: techo de escayola mediante muelles de flexión de acero.

Áreas de aplicación: pasos exteriores, aeropuertos, marquesinas, estaciones y parkings, entre otros.

Downlight for recessed mounting to ceiling.

Housing: in steel sheet and trim in die-cast aluminium.

Reflector: polished (RA) anodised aluminium.

Diffuser: microprismatic PMMA.

Cover: clear PMMA.

Surface finish: white (RAL 9003). Other colours, on request.

Light distribution: symmetric.

Light source: LED.

Colour rendering index (CRI): CRI>80, CRI>90.

Colour temperature (K): 3000K, 4000K.

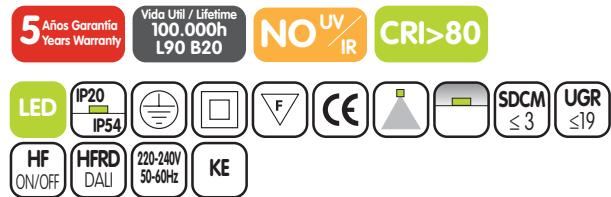
Colour tolerance (SDCM): 3 MacAdam's ellipses.

Control gear: electronic (HF) or DALI dimmable (HFRD). Available with emergency kit (KE).

Protection degree (IP): IP20. IP54 (exposed side).

Mounting: plasterboard ceiling by means of steel bending springs.

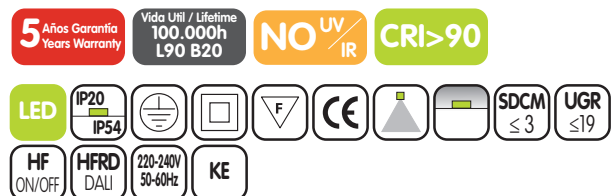
Areas of application: outdoor corridors, airports, shelters, stations, parkings and others.



R3 PTR 54 1 RA

| W | Im* 3000K | Im* 4000K | CRI | T° Amb | ▲ | Ø D | H | Kg |
|----|--------------|--------------|------|-------------|-----|-----|-----|------|
| 15 | 1650 | 1750 | > 80 | -20°C +35°C | 65° | 166 | 113 | 0,80 |
| 19 | 2150 | 2250 | > 80 | -20°C +35°C | 65° | 166 | 113 | 0,80 |

*Flujo luminoso neto a temperatura ambiente ta=25°C. *Output luminous flux at ambient temperature ta=25°C.



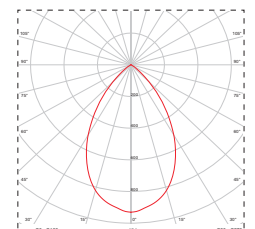
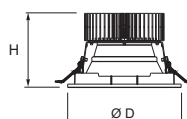
R3 PTR 54 1 RA

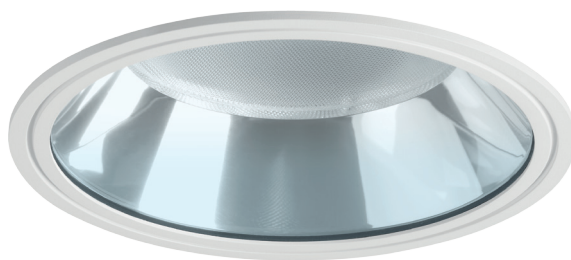
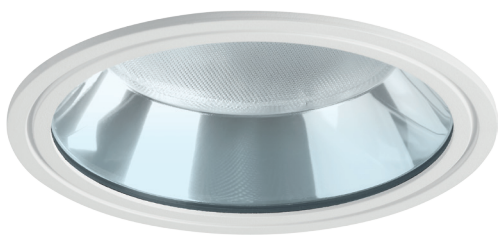
| W | Im* 3000K | Im* 4000K | CRI | T° Amb | ▲ | Ø D | H | Kg |
|----|--------------|--------------|------|-------------|-----|-----|-----|------|
| 15 | 1485 | 1575 | > 90 | -20°C +35°C | 65° | 166 | 113 | 0,80 |
| 19 | 1935 | 2025 | > 90 | -20°C +35°C | 65° | 166 | 113 | 0,80 |

*Flujo luminoso neto a temperatura ambiente ta=25°C. *Output luminous flux at ambient temperature ta=25°C.

Ejemplo para componer una referencia. Example to compose a reference.

| Modelo | Reflector | Potencia | K | CRI | Alimentación |
|-------------|-----------|----------|-------|-------|--------------|
| Model | Reflector | Power | K | CRI | Control gear |
| R3 PTR 54 2 | RA | 24W | 4000K | CRI80 | HF |





5 Años Garantía / 5 Years Warranty
Vida Útil / Lifetime 100.000h L90 B20
NO UV/IR
CRI>80

LED
IP20
IP54
☉
☐
∇
CE
▲
▬
SDCM ≤3
UGR ≤19

HF ON/OFF
HFRD DALI
220-240V 50-60Hz
KE

R3 PTR 54 2 RA

| W | Im* 3000K | Im* 4000K | CRI | Tª Amb | ▲ | Ø D | H | Kg |
|----|-----------|-----------|------|-------------|-----|-----|-----|------|
| 19 | 2150 | 2250 | > 80 | -20°C +35°C | 70° | 216 | 116 | 0,90 |
| 24 | 2750 | 2850 | > 80 | -20°C +35°C | 70° | 216 | 116 | 0,90 |

*Flujo luminoso neto a temperatura ambiente ta=25°C. *Output luminous flux at ambient temperature ta=25°C.

5 Años Garantía / 5 Years Warranty
Vida Útil / Lifetime 100.000h L90 B20
NO UV/IR
CRI>80

LED
IP20
IP54
☉
☐
∇
CE
▲
▬
SDCM ≤3
UGR ≤19

HF ON/OFF
HFRD DALI
220-240V 50-60Hz
KE

R3 PTR 54 3 RA

| W | Im* 3000K | Im* 4000K | CRI | Tª Amb | ▲ | Ø D | H | Kg |
|----|-----------|-----------|------|-------------|-----|-----|-----|------|
| 29 | 3250 | 3400 | > 80 | -20°C +35°C | 65° | 266 | 139 | 1,10 |
| 33 | 3800 | 4000 | > 80 | -20°C +35°C | 65° | 266 | 139 | 1,10 |

*Flujo luminoso neto a temperatura ambiente ta=25°C. *Output luminous flux at ambient temperature ta=25°C.

5 Años Garantía / 5 Years Warranty
Vida Útil / Lifetime 100.000h L90 B20
NO UV/IR
CRI>90

LED
IP20
IP54
☉
☐
∇
CE
▲
▬
SDCM ≤3
UGR ≤19

HF ON/OFF
HFRD DALI
220-240V 50-60Hz
KE

R3 PTR 54 2 RA

| W | Im* 3000K | Im* 4000K | CRI | Tª Amb | ▲ | Ø D | H | Kg |
|----|-----------|-----------|------|-------------|-----|-----|-----|------|
| 19 | 1485 | 1575 | > 90 | -20°C +35°C | 70° | 216 | 116 | 0,90 |
| 24 | 1935 | 2025 | > 90 | -20°C +35°C | 70° | 216 | 116 | 0,90 |

*Flujo luminoso neto a temperatura ambiente ta=25°C. *Output luminous flux at ambient temperature ta=25°C.

5 Años Garantía / 5 Years Warranty
Vida Útil / Lifetime 100.000h L90 B20
NO UV/IR
CRI>90

LED
IP20
IP54
☉
☐
∇
CE
▲
▬
SDCM ≤3
UGR ≤19

HF ON/OFF
HFRD DALI
220-240V 50-60Hz
KE

R3 PTR 54 3 RA

| W | Im* 3000K | Im* 4000K | CRI | Tª Amb | ▲ | Ø D | H | Kg |
|----|-----------|-----------|------|-------------|-----|-----|-----|------|
| 29 | 2925 | 3060 | > 90 | -20°C +35°C | 65° | 266 | 139 | 1,10 |
| 33 | 3420 | 3600 | > 90 | -20°C +35°C | 65° | 266 | 139 | 1,10 |

*Flujo luminoso neto a temperatura ambiente ta=25°C. *Output luminous flux at ambient temperature ta=25°C.

