

R3 UNIT SQ

Downlight para montaje empotrado en techo con óptica extraíble y orientable (355° horizontal / 90° vertical).

Cuerpo: aluminio.

Óptica: lentes.

Acabado superficial: blanco o negro. Otros colores, consultar.

Distribución de la luz: simétrica.

Fuente de luz: LED.

Índice de reproducción cromática (CRI): CRI>90.

Temperatura de color (K): 2700K, 3000K, 4000K.

Tolerancia de color (SDCM): 3 elipses de MacAdam.

Bajo pedido: CRI>80: 2700K, 3000K, 4000K, 5000K.

Equipo de alimentación: On-Off (HF), regulable 1-10V (HFR), regulable por corte de fase (HFRP) o DALI (HFRD).

Grado de protección (IP): IP20.

Montaje: techo de escayola mediante piezas de acero.

Áreas de aplicación: zonas comunes de interior, tiendas, pasillos, halls de entrada, hoteles, oficinas, aeropuertos, entre otros.

Downlight for recessed mounting to ceiling and directionable optic (355° horizontal / 90° vertical).

Housing: aluminium.

Optic: lens.

Surface finish: white or black. Other colours, on request.

Light distribution: symmetric.

Light source: LED.

Colour rendering index (CRI): CRI>90.

Colour temperature (K): 2700K, 3000K, 4000K.

Colour tolerance (SDCM): 3 MacAdam's ellipses.

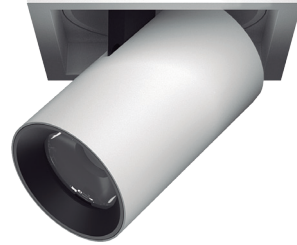
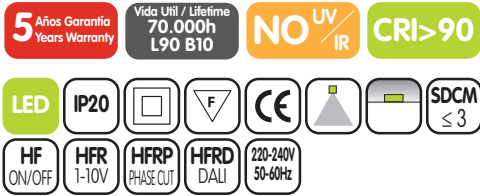
On request: CRI>80: 2700K, 3000K, 4000K, 5000K.

Control gear: On-Off (HF), 1-10V dimmable (HFR), phase cut dimmable (HFRP) or DALI dimmable (HFRD).

Protection degree (IP): IP20.

Mounting: plasterboard ceiling by steel pieces.

Areas of application: interior common areas, boutiques, corridors, entrance halls, hotels, offices, airports and others.



R3 UNIT SQ S

| W | lm * | K | CRI | Tª Amb | ▲ | L | A | H | d |
|---|------|------|------|-------------|------------|----|----|----|----|
| 5 | 405 | 2700 | > 90 | -20°C +45°C | 15° | 64 | 64 | 94 | 55 |
| 5 | 420 | 3000 | > 90 | -20°C +45°C | 24° 38° | 64 | 64 | 94 | 55 |
| 5 | 440 | 4000 | > 90 | -20°C +45°C | 50° | 64 | 64 | 94 | 55 |

*Flujo luminoso neto a temperatura ambiente ta=25°C. *Output luminous flux at ambient temperature ta=25°C.

R3 UNIT SQ M

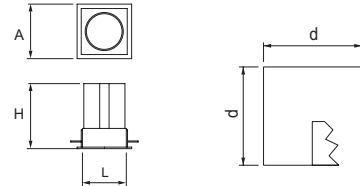
| W | lm * | K | CRI | Tª Amb | ▲ | L | A | H | d |
|----|------|------|------|-------------|------------|----|----|-----|----|
| 10 | 810 | 2700 | > 90 | -20°C +45°C | 15° | 85 | 85 | 116 | 75 |
| 10 | 840 | 3000 | > 90 | -20°C +45°C | 24° 38° | 85 | 85 | 116 | 75 |
| 10 | 880 | 4000 | > 90 | -20°C +45°C | 50° | 85 | 85 | 116 | 75 |

*Flujo luminoso neto a temperatura ambiente ta=25°C. *Output luminous flux at ambient temperature ta=25°C.

R3 UNIT SQ L

| W | lm * | K | CRI | Tª Amb | ▲ | L | A | H | d |
|----|------|------|------|-------------|------------|-----|-----|-----|----|
| 20 | 1620 | 2700 | > 90 | -20°C +45°C | 15° | 105 | 105 | 145 | 95 |
| 20 | 1680 | 3000 | > 90 | -20°C +45°C | 24° 38° | 105 | 105 | 145 | 95 |
| 20 | 1760 | 4000 | > 90 | -20°C +45°C | 50° | 105 | 105 | 145 | 95 |

*Flujo luminoso neto a temperatura ambiente ta=25°C. *Output luminous flux at ambient temperature ta=25°C.



Ejemplo para componer una referencia. Example to compose a reference.

| Modelo | Potencia | K | CRI | Alimentación | Haz | Color |
|--------------|----------|-------|-------|--------------|------|--------|
| Model | Power | K | CRI | Control gear | Beam | Colour |
| R3 UNIT SQ M | 10W | 4000K | CRI90 | HF | 24° | Blanco |

La rápida evolución tecnológica del LED modifica de manera continua sus prestaciones.

Los datos aquí facilitados son orientativos.

BIAR Lighting, S.L. se reserva el derecho para realizar ligeras modificaciones técnicas sin previo aviso.

The rapid technological evolution of LED changes continuously its performance.

The data provided here are approximate.

BIAR Lighting, S.L. reserve the right to make slight changes in technical data without previous notice.