

R3 PTR 54 LED RA

Downlight para montaje empotrado en techo.

Cuerpo: estructura en chapa de acero y marco en aluminio inyectado.

Reflector: aluminio anodizado brillo (RA).

Difusor: PMMA microprismático.

Cubierta: PMMA transparente

Acabado superficial: blanco (RAL 9003). Otros colores, consultar.

Distribución de la luz: simétrica.

Fuente de luz: LED.

Índice de reproducción cromática (CRI): CRI>80, CRI>90.

Temperatura de color (K): 3000K, 4000K.

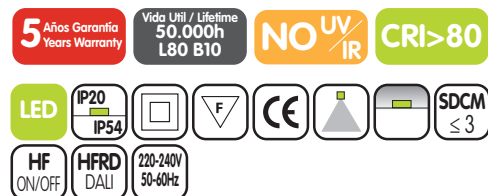
Tolerancia de color (SDCM): 3 elipses de MacAdam.

Equipo de alimentación: electrónico (HF) o regulable DALI (HFRD). Disponible con kit de emergencia (KE).

Grado de protección (IP): IP20. IP54 (parte vista).

Montaje: techo de escayola mediante muelles de flexión de acero.

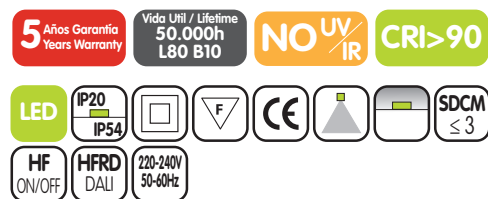
Áreas de aplicación: pasos exteriores, aeropuertos, marquesinas, estaciones y parkings, entre otros.



R3 PTR 54 LED 0 RA

W	Im *	Im/W	K	CRI	T° Amb	▲	Ø D	H	Kg
8	800	100	3000	> 80	-20°C +35°C	60°	116	76	0,60
8	850	106	4000	> 80	-20°C +35°C	60°	116	76	0,60
11	1100	100	3000	> 80	-20°C +35°C	60°	116	76	0,60
11	1150	105	4000	> 80	-20°C +35°C	60°	116	76	0,60

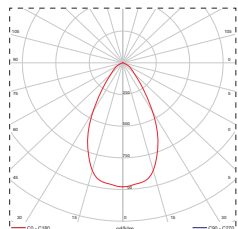
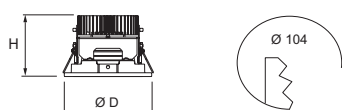
*Flujo luminoso neto a temperatura ambiente ta=25°C. *Output luminous flux at ambient temperature ta=25°C.



R3 PTR 54 LED 0 RA

W	Im *	Im/W	K	CRI	T° Amb	▲	Ø D	H	Kg
8	720	90	3000	> 90	-20°C +35°C	60°	116	76	0,60
8	765	96	4000	> 90	-20°C +35°C	60°	116	76	0,60
11	990	90	3000	> 90	-20°C +35°C	60°	116	76	0,60
11	1035	94	4000	> 90	-20°C +35°C	60°	116	76	0,60

*Flujo luminoso neto a temperatura ambiente ta=25°C. *Output luminous flux at ambient temperature ta=25°C.



Downlight for recessed mounting to ceiling.

Housing: in steel sheet and trim in die-cast aluminium.

Reflector: polished (RA) anodised aluminium.

Diffuser: microprismatic PMMA.

Cover: clear PMMA.

Surface finish: white (RAL 9003). Other colours, on request.

Light distribution: symmetric.

Light source: LED.

Colour rendering index (CRI): CRI>80, CRI>90.

Colour temperature (K): 3000K, 4000K.

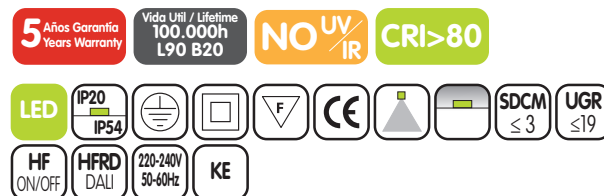
Colour tolerance (SDCM): 3 MacAdam's ellipses.

Control gear: electronic (HF) or DALI dimmable (HFRD). Available with emergency kit (KE).

Protection degree (IP): IP20. IP54 (exposed side).

Mounting: plasterboard ceiling by means of steel bending springs.

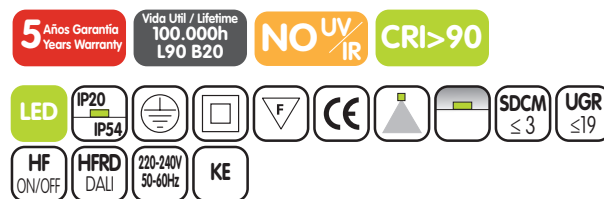
Areas of application: outdoor corridors, airports, shelters, stations, parkings and others.



R3 PTR 54 LED 1 RA

W	Im *	Im/W	K	CRI	T° Amb	▲	Ø D	H	Kg
15	1650	110	3000	> 80	-20°C +35°C	65°	166	113	0,80
15	1750	117	4000	> 80	-20°C +35°C	65°	166	113	0,80
19	2150	113	3000	> 80	-20°C +35°C	65°	166	113	0,80
19	2250	118	4000	> 80	-20°C +35°C	65°	166	113	0,80

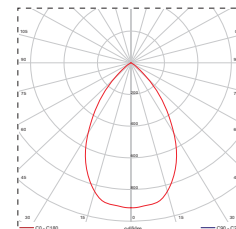
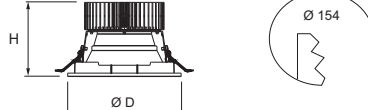
*Flujo luminoso neto a temperatura ambiente ta=25°C. *Output luminous flux at ambient temperature ta=25°C.



R3 PTR 54 LED 1 RA

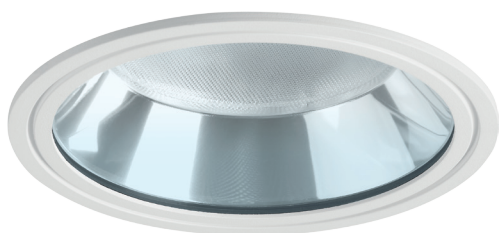
W	Im *	Im/W	K	CRI	T° Amb	▲	Ø D	H	Kg
15	1485	99	3000	> 90	-20°C +35°C	65°	166	113	0,80
15	1575	105	4000	> 90	-20°C +35°C	65°	166	113	0,80
19	1935	102	3000	> 90	-20°C +35°C	65°	166	113	0,80
19	2025	107	4000	> 90	-20°C +35°C	65°	166	113	0,80

*Flujo luminoso neto a temperatura ambiente ta=25°C. *Output luminous flux at ambient temperature ta=25°C.



Ejemplo para componer una referencia. Example to compose a reference.

Modelo	Reflector	Potencia	K	CRI	Alimentación
Model	Reflector	Power	K	CRI	Control gear
R3 PTR 54 LED 1	RA	15W	4000K	CRI80	HF



R3 PTR 54 LED 2 RA

W	Im *	Im/W	K	CRI	T ^a Amb	▲	Ø D	H	Kg
19	2150	113	3000	> 80	-20°C +35°C	70°	216	116	0,90
19	2250	118	4000	> 80	-20°C +35°C	70°	216	116	0,90
24	2750	115	3000	> 80	-20°C +35°C	70°	216	116	0,90
24	2850	119	4000	> 80	-20°C +35°C	70°	216	116	0,90

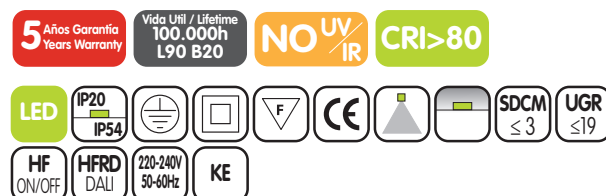
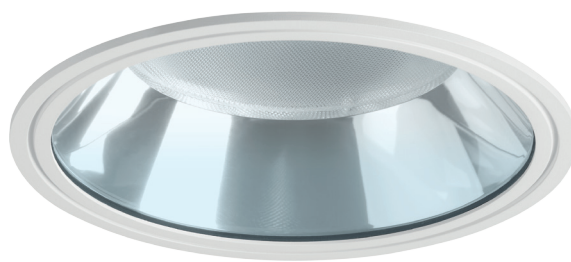
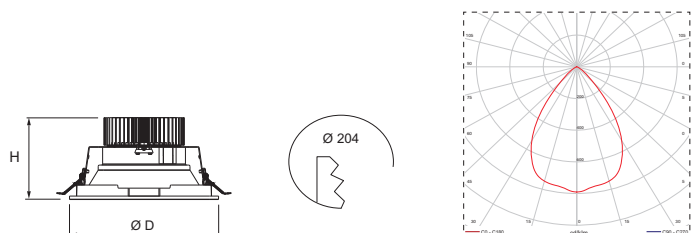
*Flujo luminoso neto a temperatura ambiente ta=25°C. *Output luminous flux at ambient temperature ta=25°C.



R3 PTR 54 LED 2 RA

W	Im *	Im/W	K	CRI	T ^a Amb	▲	Ø D	H	Kg
19	1935	102	3000	> 90	-20°C +35°C	70°	216	116	0,90
19	2025	107	4000	> 90	-20°C +35°C	70°	216	116	0,90
24	2475	103	3000	> 90	-20°C +35°C	70°	216	116	0,90
24	2565	107	4000	> 90	-20°C +35°C	70°	216	116	0,90

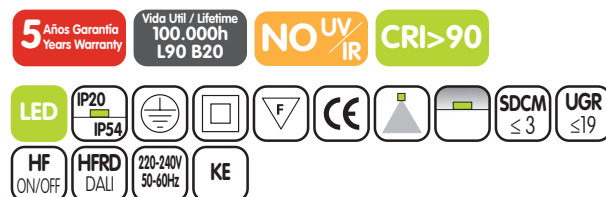
*Flujo luminoso neto a temperatura ambiente ta=25°C. *Output luminous flux at ambient temperature ta=25°C.



R3 PTR 54 LED 3 RA

W	Im *	Im/W	K	CRI	T ^a Amb	▲	Ø D	H	Kg
28	3150	113	3000	> 80	-20°C +35°C	65°	266	139	1,10
28	3300	118	4000	> 80	-20°C +35°C	65°	266	139	1,10
32	3650	114	3000	> 80	-20°C +35°C	65°	266	139	1,10
32	3800	119	4000	> 80	-20°C +35°C	65°	266	139	1,10

*Flujo luminoso neto a temperatura ambiente ta=25°C. *Output luminous flux at ambient temperature ta=25°C.



R3 PTR 54 LED 3 RA

W	Im *	Im/W	K	CRI	T ^a Amb	▲	Ø D	H	Kg
28	2835	101	3000	> 90	-20°C +35°C	65°	266	139	1,10
28	2970	106	4000	> 90	-20°C +35°C	65°	266	139	1,10
32	3285	103	3000	> 90	-20°C +35°C	65°	266	139	1,10
32	3420	107	4000	> 90	-20°C +35°C	65°	266	139	1,10

*Flujo luminoso neto a temperatura ambiente ta=25°C. *Output luminous flux at ambient temperature ta=25°C.

